

# **Gardner** **Denver**

L23RS-L29RS (30-40 HP)  
VARIABLE SPEED ROTARY SCREW COMPRESSORS

## LRS Series



# Advanced Technology Inspired Simplicity

## A Better Approach

Gardner Denver has a long history of manufacturing compressed air equipment. With our LRS Series line of products, we have uniquely combined ***simplicity*** with ***cutting-edge design***. The result—a compressor that delivers outstanding performance with unprecedented serviceability.





## The Total Package

Gardner Denver has the total package—extensive compressor and air treatment product lines, sales and service support through our extensive network of authorized local distributors, and industry leading warranty programs. Because we offer more than just compressed air equipment, we can provide solutions that keep you running, protect your production objectives and save you money.

Expect More?

Choose Gardner Denver



# A Whole New Level of Serviceability

Designed with the customer in mind, all Gardner Denver compressors feature a clean, simple and intuitive layout. The “advanced but simple package design” ensures first-class serviceability by:

- Lowering maintenance and service costs
  - Reduced number of components to maintain
  - Machines all feature one common layout
- Lengthening service life
  - Superior long-life components ensure excellent compressed air quality
- Limiting down time
  - Quick and complete access to grouped service components
  - Removable hinged enclosure panels

Experience the difference of a truly **service-friendly** compressor





**Gardner  
Denver**






Easy to Navigate,  
**Compact Packages**

# Small Footprint or Superior **Serviceability?**


Achieve the best of both worlds with Gardner Denver LRS Compressors. The integrated design eliminates unneeded connections and minimizes piping; allowing the footprint of the package to be reduced without overlooking the importance of serviceability.



Lower installation costs



Increased flexibility when determining installation location



Ability to more easily handle and move machines

Small Footprints = **Cost Savings**

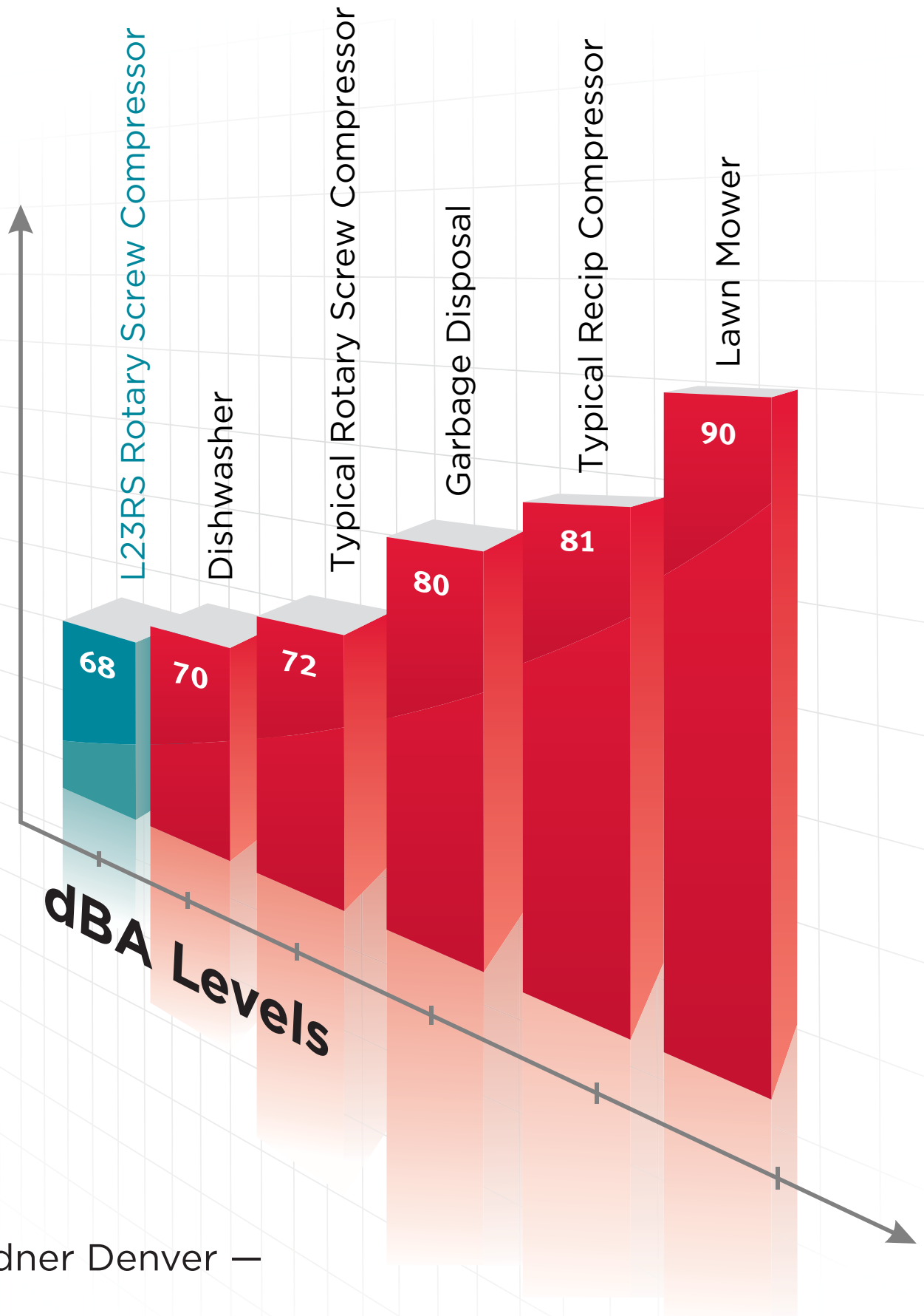
Without sacrificing serviceability, the Gardner Denver LRS Series compressor packages feature some of the smallest footprints in the industry.



## Nearly **Silent** Noise Levels

The Gardner Denver LRS Series compressor designs feature high-quality, sound-insulating enclosure panels and a low-noise, thermostatically-controlled, motor-driven fan. These components reduce the noise to whisper-quiet levels and eliminate the need for a separate compressor room, saving you money on installation costs.





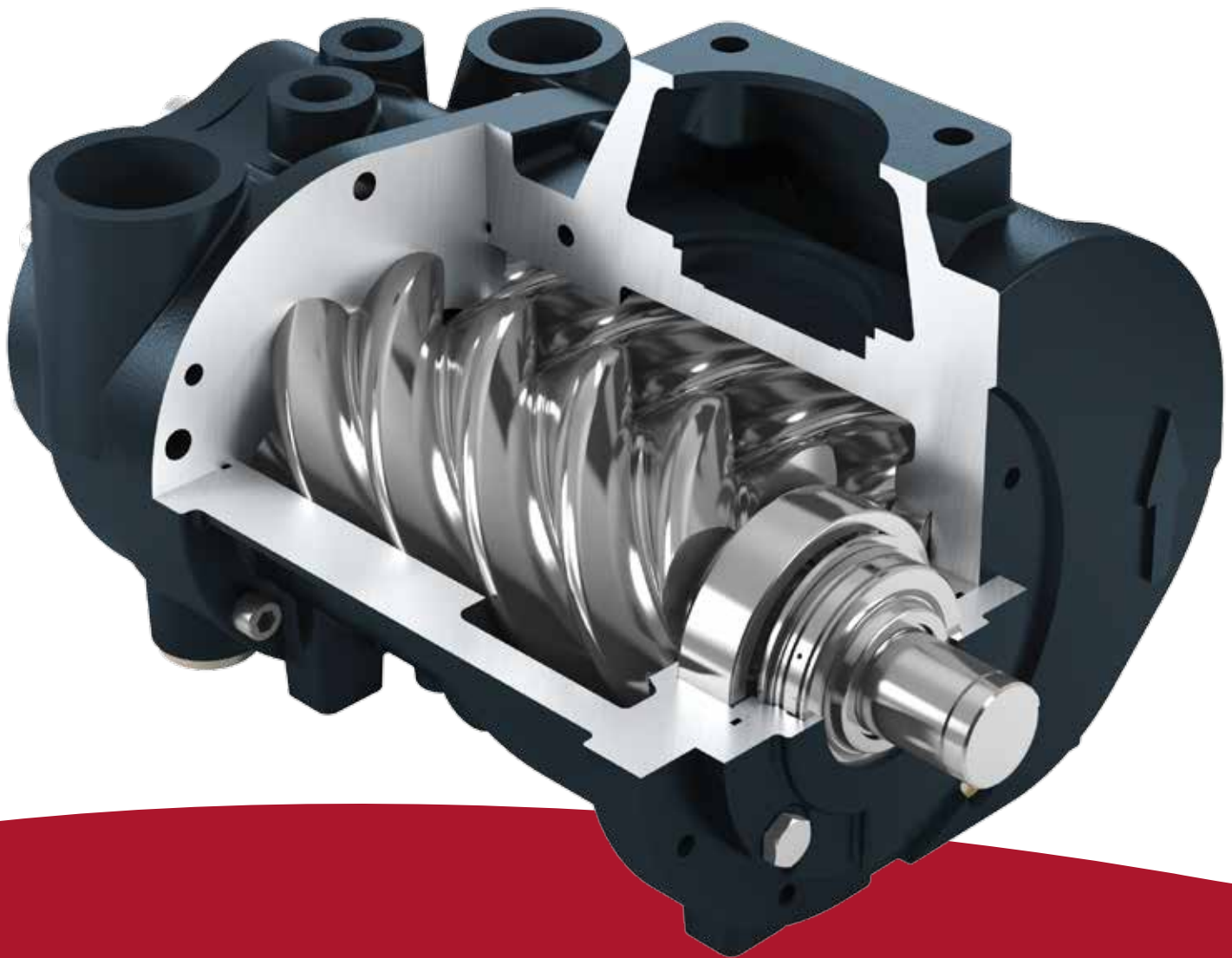
Gardner Denver —

Taking quiet to a whole new level

# Stay Focused on What Is **Important**

Compressors are more than just a financial investment. They are a key component in ensuring that you, as a manufacturer, processor and operator, receive consistent, high-quality low-cost air. Gardner Denver uses the latest design techniques to develop a compressor that focuses on the three most important aspects of a compressor.

**Reliability. Performance. Value.**



Direct Drive

Integrated  
Thermostatic  
Mixing Valve

Direct Angle  
Injection

Fewer Hose  
Connections

Low Rotational Speeds

# RELIABILITY

Integrated Oil Filter

Reduced Number  
of Components

Industrial Grade  
Components

Semi Integrated Airend

Fail Safe Shaft System

Less Leak Opportunities

As a member of the Compressed Air and Gas Institute's performance verification program, you can rest assured that the performance numbers that Gardner Denver publishes are consistent with the actual performance of our machines. Gardner Denver compressors, just as all lubricated rotary screw compressors 5 HP and above, are third-party tested to ensure that our performance numbers are accurate, easy-to-understand and verified.



Gardner Denver —  
**Exceeding** Your Expectations

# Reduce Energy. Maximize Efficiency. Save Money.

## Perfect Response to Your Individual Air Demand

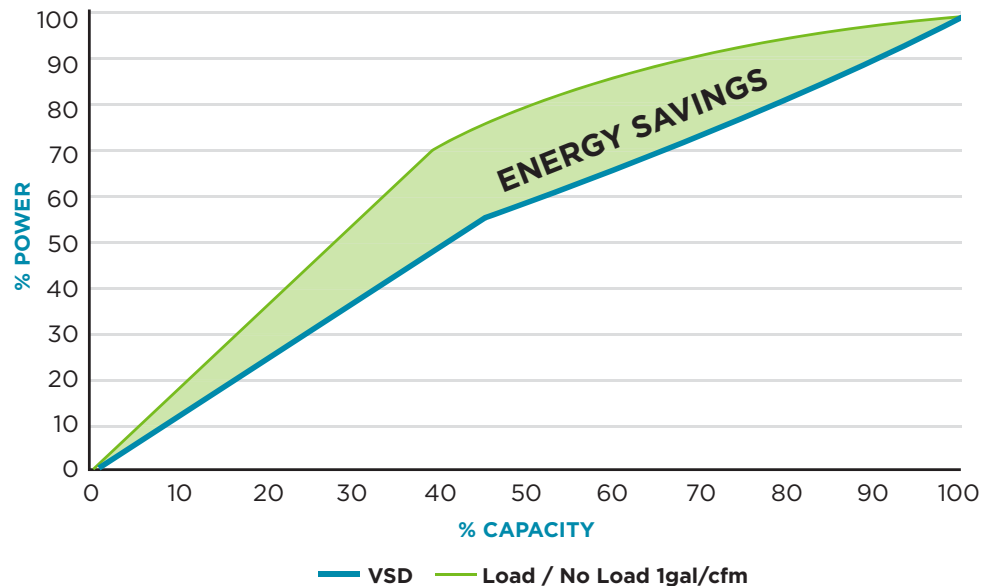
Variable speed compressors from Gardner Denver can efficiently and reliably handle the varying air demand. The right variable speed compressor in the right application delivers significant energy savings and a stable air supply at constant pressure.

## Minimize Your Energy Consumption

The largest cost component of a compressor during its lifetime is the power required to operate it. Maximum efficiency at any level of demand cuts energy costs and saves money.



Variable Speed Drive



*Energy Savings*

High Efficiency  
TEFC Motor

# Low Life Cycle Costs

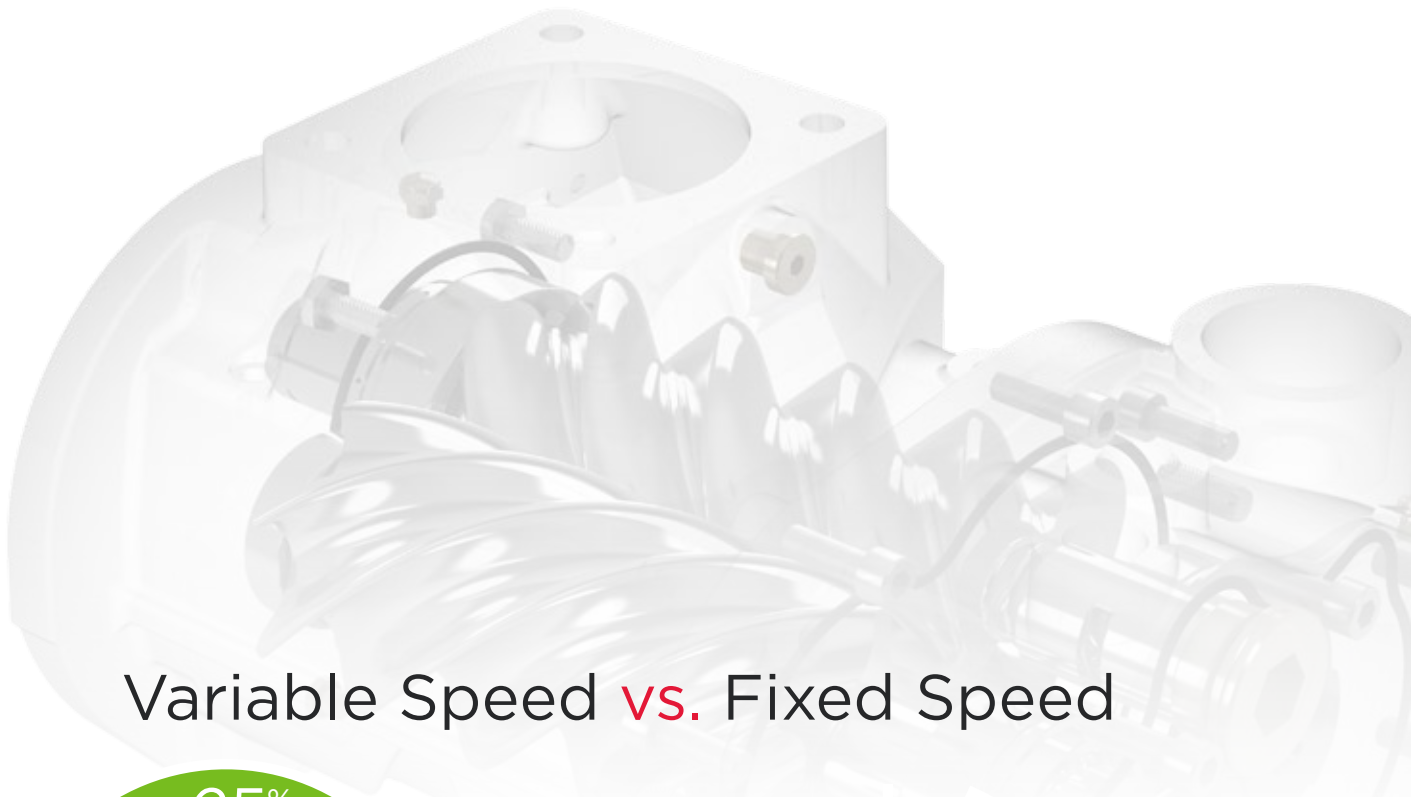
## Market Leading Energy Savings

Lowest  
kW/100  
CFM

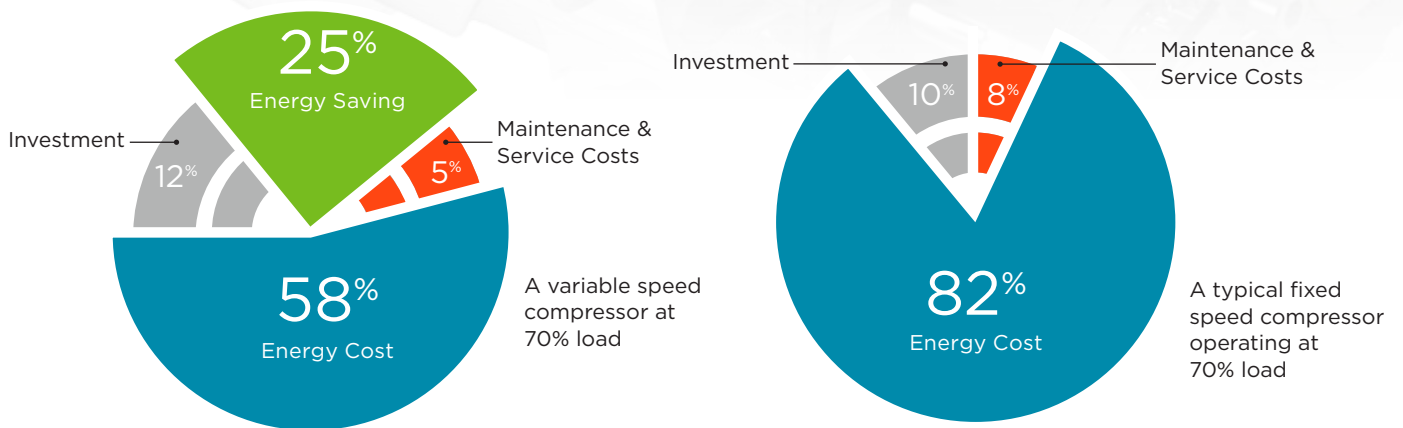
Minimal  
Pressure  
Drop

# VALUE

Superior  
Specific Power



## Variable Speed vs. Fixed Speed



Using a variable speed compressor can easily **save 25% energy** by using just the right amount of energy required to do the job and no more.

# Get in touch with the **Next Generation** of Compressor Controllers

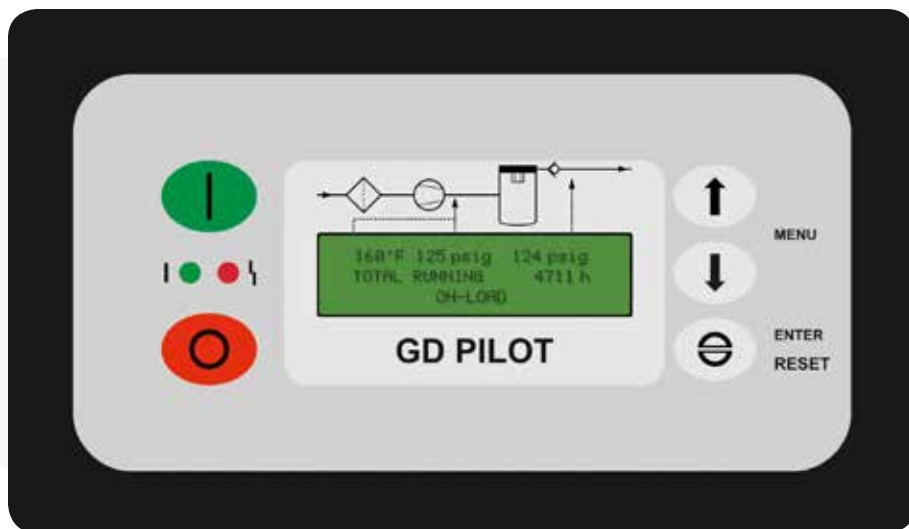
Gardner Denver completes its industry leading compressor packages with the state-of-the-art dual position GD Pilot controller. Featuring advanced software and an easy to use interface, the GD Pilot controller provides and displays an extensive amount of data on the operation of your compressor.



# Built-In **Intelligent** Controls

## GD Pilot Controller Features

- Real time clock
- Second pressure setting
- Discharge/line/network pressure data displayed
- Advanced fault history log
- Programmable inputs and outputs
- Auto restart after power failure
- RS485-Modbus RTU Standard



# Best Warranty in the Industry

## Experience Peace of Mind

Gardner Denver's engineering philosophy ensures long-lasting, reliable equipment. Our simple, but bold warranty programs demonstrate our belief in the quality found in Gardner Denver compressors.

Our standard warranty ensures that you have peace of mind when it comes to your system's operation. For added protection, take advantage of our 10-year extended airend warranty program. Simply stated, it's the best in the industry.









Superior **Support**  
at a Local Level

# Sales & Service **Distributors** Across America

## **An Extensive Network**


By leveraging the extensive network of Gardner Denver factory-trained authorized local distributors, your sales, service and technical support needs can be handled quickly and easily.

Keeping your  
compressors maintained  
and adequately serviced  
has never been simpler.



To find a distributor visit:

<http://gardnerdenverproducts.com>



# Keeping the System Healthy

## Factory-Specified Parts & Accessories

Each and every part that goes into a Gardner Denver compressed air system is tested and approved by our world-class Engineering team. Don't trust some faceless pirate to supply the vital parts and accessories that keep your compressed air system healthy. Where will they be when their knock-off parts cause problems for your operation?

## Service Components

Oil filters, separators and air filters are specified and designed into a Gardner Denver compressor as part of the total package. Replacing these components with genuine Gardner Denver parts ensures that your compressed air system remains a total package.

## Replacement Parts

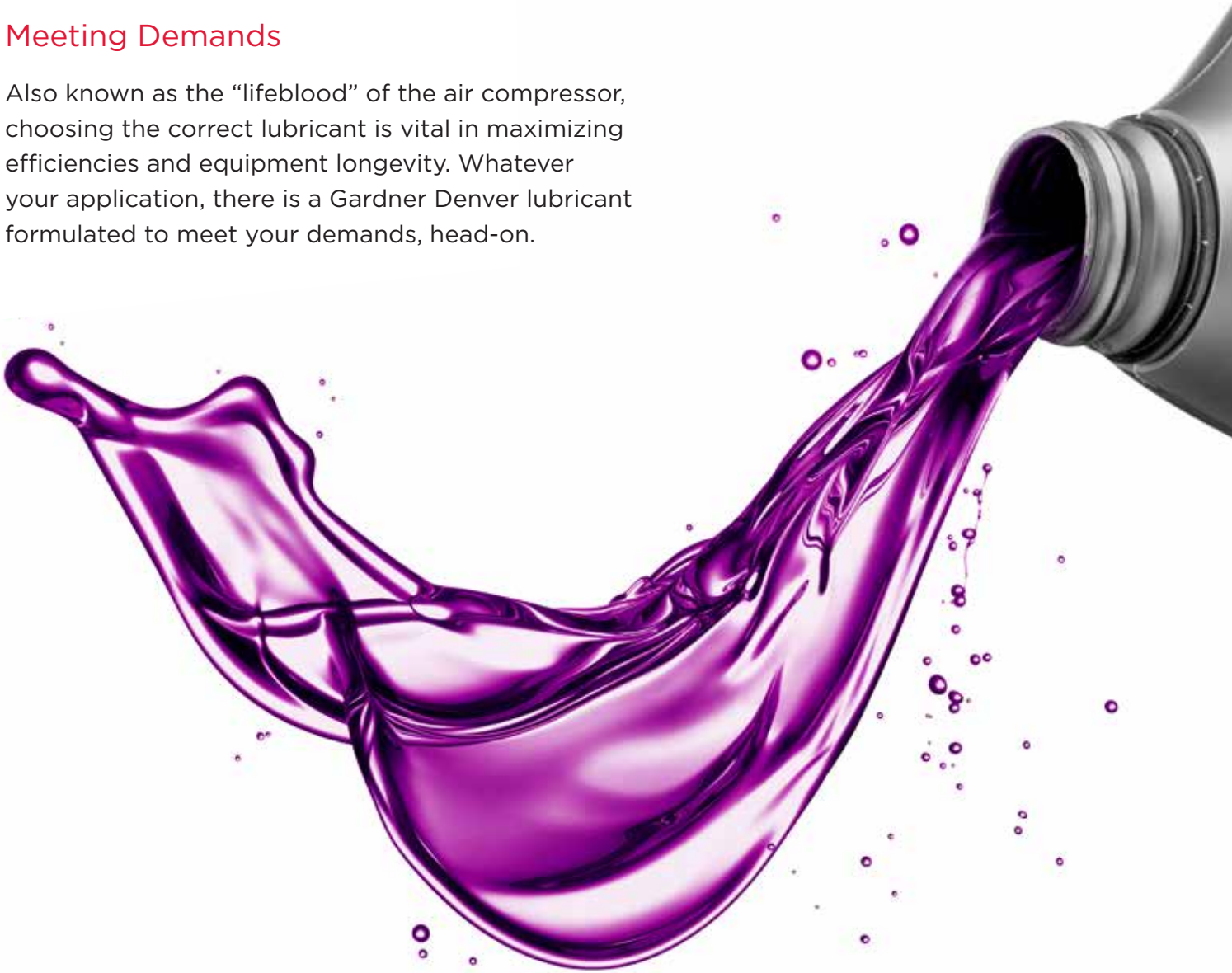
Gardner Denver air compressor parts have tolerances as low as one-ten-thousandths of an inch. Keep that in mind as you decide where to purchase your replacement parts.

Ensure your compressed air  
system remains a **total package**

# Lubricant Solutions

## Meeting Demands

Also known as the “lifeblood” of the air compressor, choosing the correct lubricant is vital in maximizing efficiencies and equipment longevity. Whatever your application, there is a Gardner Denver lubricant formulated to meet your demands, head-on.



High Temperatures Semi-Synthetic  
**SYNTHETIC**  
Food Grade High Performance



The **LRS Series** variable speed compressors are ideal for any application thanks to its **high performance** airend and **energy saving** design.

# Technical Data

## L23RS-L29RS SCREW COMPRESSOR, 60 HZ

MODEL	NOMINAL PRESSURE		DRIVE MOTOR		FAD <sup>1</sup>		NOISE LEVEL <sup>2</sup> DB(A)	WEIGHT		DIMENSIONS L x W x H IN. (MM)
	PSIG	BAR	HP	KW	CFM	M <sup>3</sup> /MIN		LBS	KG	
L23RS	100	6.9	30	22	146	4.13	68	1501	681	53 x 35 x 64 (1345 x 880 x 1612)
	125	8.6			135	3.82				
	190	13.0			102	2.89				
L26RS	100	6.9	35	26	169	4.79	70	1561	708	53 x 35 x 64 (1345 x 880 x 1612)
	125	8.6			157	4.45				
	190	13.0			126	3.57				
L29RS	100	6.9	40	30	191	5.41	70	1570	712	53 x 35 x 64 (1345 x 880 x 1612)
	125	8.6			176	4.98				
	190	13.0			135	3.82				

1) Data measured and stated in accordance with ISO1217, Ed. 4, Annex C & Annex E at the following conditions:  
Air Intake Pressure 1 bar A, Air Intake Temperature 20° C, Humidity 0% (Dry)

2) Measured in free field conditions in accordance with ISO 2151, tolerance +/- 3 dB

## L23RS-L29RS SCREW COMPRESSOR, 50 HZ

MODEL	NOMINAL PRESSURE		DRIVE MOTOR		FAD <sup>1</sup>		NOISE LEVEL <sup>2</sup> DB(A)	WEIGHT		DIMENSIONS L x W x H IN. (MM)
	PSIG	BAR	HP	KW	CFM	M <sup>3</sup> /MIN		LBS	KG	
L23RS	100	6.9	30	22	146	4.13	68	1501	681	53 x 35 x 64 (1345 x 880 x 1612)
	130	9.0			141	3.99				
	190	13.0			102	2.89				
L26RS	100	6.9	35	26	169	4.79	69	1561	708	53 x 35 x 64 (1345 x 880 x 1612)
	130	9.0			154	4.36				
	190	13.0			126	3.57				
L29RS	100	6.9	40	30	191	5.41	69	1570	712	53 x 35 x 64 (1345 x 880 x 1612)
	130	9.0			172	4.86				
	190	13.0			135	3.82				

1) Data measured and stated in accordance with ISO1217, Ed. 4, Annex C & Annex E at the following conditions:  
Air Intake Pressure 1 bar A, Air Intake Temperature 20° C, Humidity 0% (Dry)

2) Measured in free field conditions in accordance with ISO 2151, tolerance +/- 3 dB

The leader in every market we serve  
by continuously improving all business processes  
with a focus on innovation and velocity

# Gardner Denver

**Gardner Denver, Inc.**

1800 Gardner Expressway  
Quincy, IL 62305  
866-440-6241

[www.gardnerdenverproducts.com](http://www.gardnerdenverproducts.com)

©2015 Gardner Denver, Inc. Printed in U.S.A.  
GS-L23RS-L29RS 1st Ed. 3/15

 Please recycle after use.

